



## SBTV2ST

EL. HEIGHT ADJUSTABLE SYSTEM WITH LOWER CABINET

**Factory:**

Conen Produkte GmbH & Co. KG  
Conenstr. 4  
54497 Morbach-Gonzerath  
Germany

**International sales department:**

Mr. Luc van der Sterren  
Office: +49 65 33 75 311  
Cell: +31 612 495 098  
Email: [Luc@conenmounts.com](mailto:Luc@conenmounts.com)

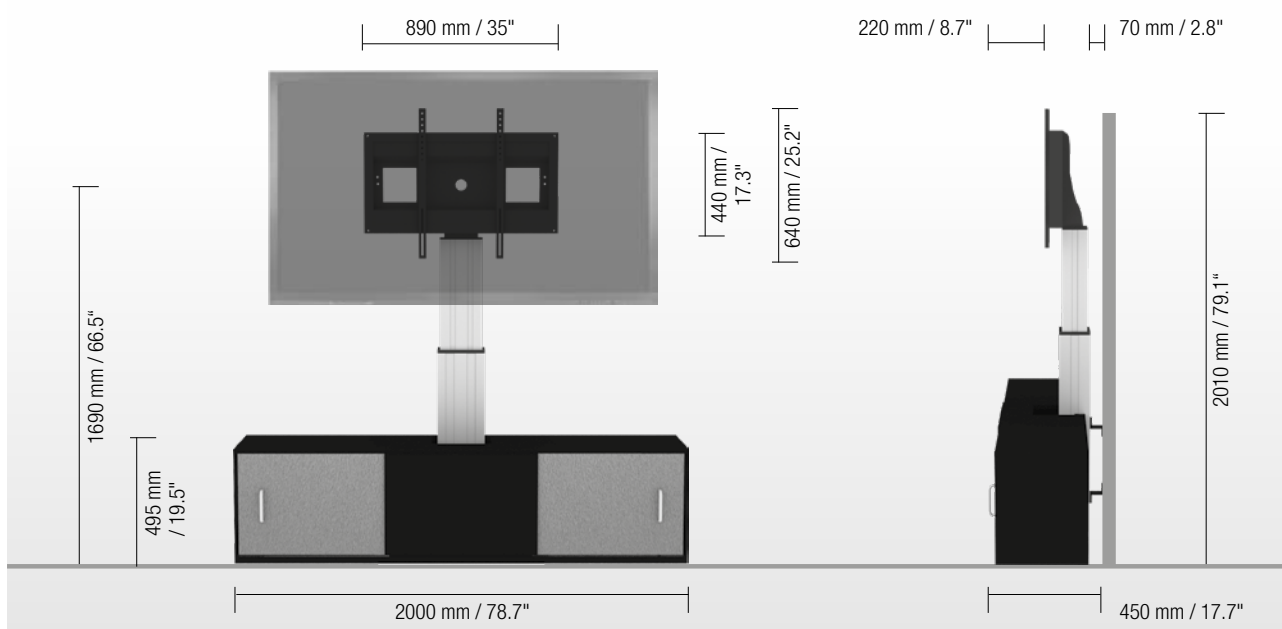
Mr. Arnaud Gielen  
Office: +49 6533 75 310  
Cell: +49 172 655 84 61  
Email: [Arnaud@conenmounts.com](mailto:Arnaud@conenmounts.com)



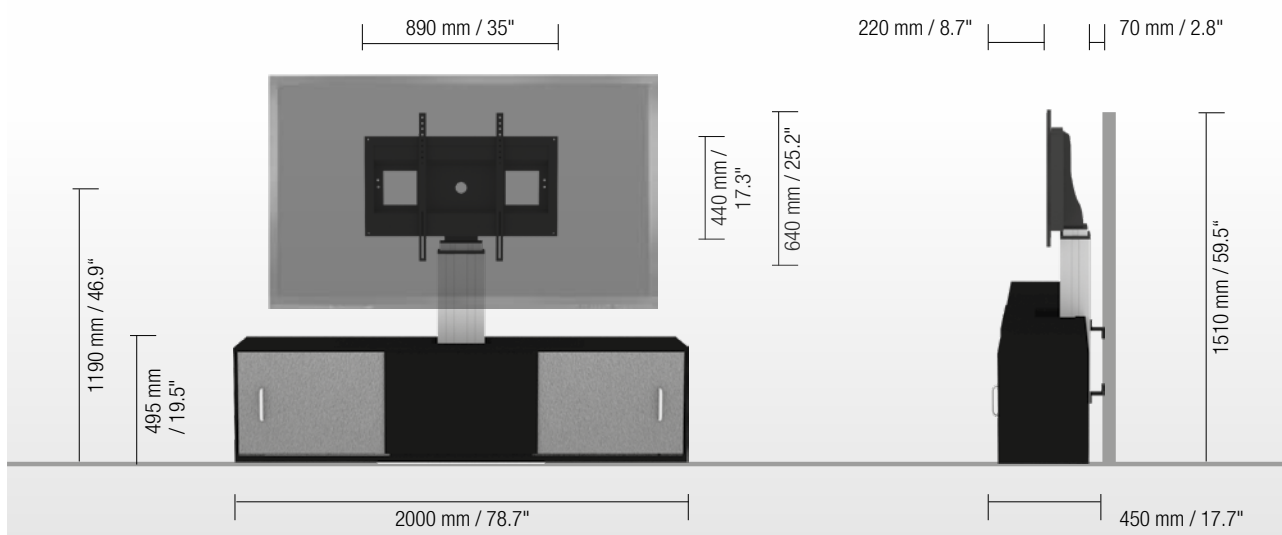
PRODUCT FEATURES

- ◆ Electrical height adjustable column, natural anodized
- ◆ 500 mm / 19.7" height adjustment
- ◆ Floor plate made of 8 mm / 0.3" strong steel, powder-coated, RAL 9006 white aluminum
- ◆ Mount for use with 42" – 86" display
- ◆ VESA 200 x 200 up to 800 x 600
- ◆ Maximum load approximately 150 kg / 330.7 lbs
- ◆ System suitable for wall mounting on massive walls or gypsum plasterboard walls
- ◆ Lower cabinet with 2 lockable sliding doors with handles. 1 height-adjustable shelf in each cabinet side.
- ◆ Dimensions cabinet, W/H/D:  
2000 x 495 x 450 mm / 78.7 x 19.5 x 17.7"  
Inner dimensions cabinet side, W/H/D:  
470 x 435 x 400 mm / 18.5 x 17.1 x 15.8"

HIGHEST POSITION



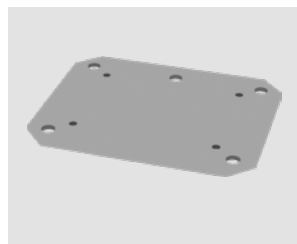
LOWEST POSITION



DETAILANSICHTEN | DETAIL VIEWS



Pull & release locking brackets for easier mounting of display



Floor plate



Wired remote control

OBERFLÄCHEN FÜR MELAMINBESCHICHTETE SPANPLATTEN | FINISHES FOR MELAMINE-COATED CHIPBOARDS

STANDARD | STANDARD FINISHES



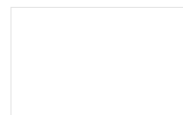
Light beech



Beech



Maple honey



White



Grey

SONDEROBERFLÄCHEN MIT TEXTUR | SPECIAL FINISHES WITH TEXTUR



Ash tree white



Pastel oak



Olive



Zebrano

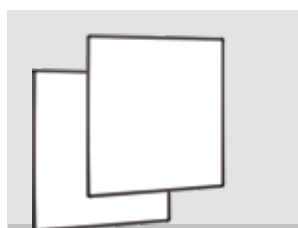


Puntinella black



Calvados

WÄHLBARES ZUBEHÖR | AVAILABLE ACCESSORIES



SWBW-..

2 whiteboard side wings



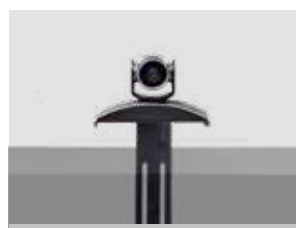
MINI-FUJI

Lockable mini PC bracket



AFSCETAKB

Keyboard shelf



VCTSCETA / VCTSCETA7584

Video conference camera top shelf



CCE-EXT20

Extender (200 mm)



REM

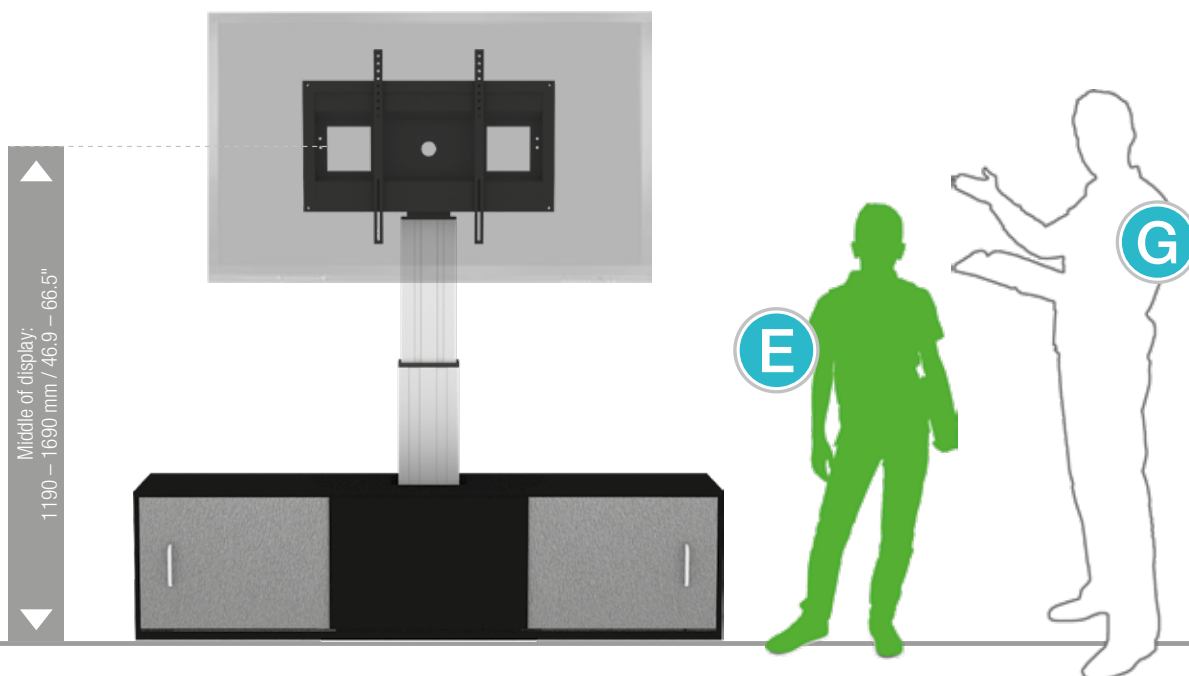
Remote Control



SCHLIESS-VH

Display securing padlock

SIZE INDEX



Department	Primary school				Adults		
	Kindergarten			Secondary school			
Silhouette	A	B	C	D	E	F	G
Age (years)	2 – 3	3 – 4	4 – 7	6 – 11	11 – 14	13 – 16	from 16
Body size (mm / ")	930 – 980 37 – 38.6	1080 – 1210 42.5 – 47.6	1190 – 1420 46.9 – 56	1330 – 1590 52.4 – 62.6	1460 – 1765 57.5 – 69.5	1590 – 1880 62.6 – 74	1740 – 2070 68.5 – 81.5
Color							

PACKING UNITS

Item no.	Description	Packing dimensions (mm / ")	Net weight (kg / lbs)	Gross weight (kg / lbs)
CCE70-W	Electrical height adjustable column, 500 mm / 19.7" height adjustment, L = 900 mm / 35.4"	1180 x 270 x 200 / 46.5 x 10.7 x 7.9	21,0 / 46.3	23,1 / 50.9
AF-SCETA-N	Display mount	160 x 900 x 450 / 6.3 x 35.4 x 17.1	11,7 / 25.8	13,6 / 30.0
PSTSCETA	Floor plate	20 x 750 x 600 / 0.8 x 29.5 x 23.6	21,0 / 46.3	21,8 / 48.1
SB2ST	Lower cabinet	2100 x 595 x 550 / 82.7 x 23.4 x 21.7	75,1 / 165.6	80,0 / 176.4
Total weight			128,8 / 284.0	138,5 / 305.4